

# Panels

## ABB Ability™ Symphony® Plus Hardware Selector



The Panel 800 family comprises user-friendly, intuitive, and ergonomic operator panels that combine slim, space-saving dimensions with a comprehensive range of advanced functions. Designed to make process automation easy, all panels are equipped with touchscreen operation with advanced functionality for process and equipment control.

The Panel 800 family is configured using ABB's Panel Builder tool which contains a wide range of advanced functions.

A wide range of user-friendly, intuitive, and ergonomic operator panels for process automation systems gives you the right information at the right time, and in the right place. The Panel 800 family is configured using ABB's Panel Builder tool which contains a wide range of advanced functions. The functions are tested and developed with customer needs and preferences in focus.

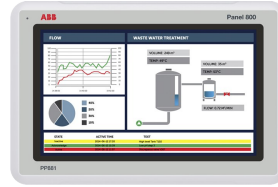
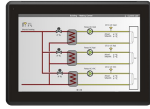
For updated information regarding this hardware please visit our Hardware Selector. In the hardware selector, you can compare different controllers, communication interfaces, I/O systems, I/O module termination units, network equipment, panels, power supplies & voters. Print your own PDF files or save an outline of all modules in the product area.

Below is an outline of the range of different panels available.



Specific feature <sup>1</sup>	Panel 800 6.2 2000 tags (Dongles)	Panel 800 6.2 250 tags (Dongles)	Panel 800 6.2 4000 tags (Dongles)	PP875
<b>General info</b>				
Article number	3BSE093565R1	3BSE093564R1	3BSE093566R1	3BSE092977R1
Processor	Standard PC running Win 7 or Win 10			ARM9 (1 GHz)
External storage media	Uses ordinary PC USB port.			2 GB (SSD), 1.5 GB free for application storage
Net weight (kg)	0.13 kg			0.8
Operating temperature	-30 °C to +70 °C			-10 °C to +60 °C
Category				Standard
Display type				Touch
Display size				7"
Brightness				350 cd/m <sup>2</sup>
Display resolution, ratio				800 x 480 (16:9)
Main memory				512 MB
Dimension WxHxD (mm)				204 x 143 x 50 mm
Power supply				+ 24 V DC (18 to 32 V DC)
<b>Dimensions</b>				
Dimension W×H×D (mm)				204 x 143 x 50 mm
Cut-out dimension W×H (mm)				187 x 126 mm
Mounting depth mm. (Including clearance)				43 (143)
Mounting				Panel Mount and VESA 75 × 75
<b>Environment and certification</b>				
RoHS compliance	DIRECTIVE/2011/65/EU			
WEEE compliance	DIRECTIVE/2012/19/EU			

<sup>1</sup> For detailed information on each module, please visit: [symphonyplushardwareselector.automation.abb.com](https://symphonyplushardwareselector.automation.abb.com)



Specific feature <sup>1</sup>	PP875H	PP875M	PP881	PP883
<b>General info</b>				
Article number	3BSE092983R1	3BSE092982R1	3BSE092978R1	3BSE092979R1
Processor	ARM9 (1 GHz)			
External storage media	1 × SD card slot (or SDHC with latest image loaded)	1 × SD card slot (or SDHC with latest image loaded)	2 GB SSD, 1.5 GB free for application storage	2 GB SSD, 1.5 GB free for application storage
Operating temperature	-10 °C to +60 °C			
Category	Black		Standard	
Display type	Touch			
Display size	7"		10.1"	12.1"
Brightness	1000 cd/m <sup>2</sup>	500 cd/m <sup>2</sup>		400 cd/m <sup>2</sup>
Display resolution, ratio	800 x 480 pixels	800 x 480 (16:9)	1024x600 pixels	1280 x 800 pixels
Main memory	2 GB	512 MB	1 GB	
Dimension WxHxD (mm)	204 x 143 x 50 mm	204 x 143 x 50 mm	292 x 194 x 52 mm	340 x 242 x 57 mm
Power supply	24 V DC (18 to 32 VDC)	24 VDC (18-32 VDC)	+ 24 V DC (18 to 32 VDC)	
<b>Dimensions</b>				
Dimension W×H×D (mm)	204 x 143 x 50 mm	204 x 143 x 50 mm	292 x 194 x 52 mm	340 x 242 x 57 mm
Cut-out dimension W×H (mm)	189 x 128 mm	189 x 128 mm	275 x 177 mm	324 x 226 mm
Mounting depth mm. (Including clearance)	43 (143) mm		45 (145)	49 (149) mm
Mounting	Panel Mount, VESA 75 x 75	Panel Mount, VESA 75 x 75	Panel Mount, VESA 75 x 75	
Weight	0.8 kg		1.65 kg	2.6 kg
<b>Environment and certification</b>				
RoHS compliance	DIRECTIVE/2011/65/EU			
WEEE compliance	DIRECTIVE/2012/19/EU			

<sup>1</sup> For detailed information on each module, please visit: [symphonyplushardwareselector.automation.abb.com](https://symphonyplushardwareselector.automation.abb.com)



Specific feature <sup>1</sup>	PP886	PP886M	PP886R	PP887H
<b>General info</b>				
Article number	3BSE092980R1	3BSE092984R1	3BSE092985R1	3BSE092986R1
Processor	ARM9 (1 GHz)		ARM9 (800 MHz)	ARM9 (1 GHz)
External storage media	2 GB SSD, 1.5 GB free for application storage	1 × SD card slot (or SDHC with latest image loaded)	1 × SD card slot (or SDHC with latest image loaded)	1 × SD card slot (or SDHC with latest image loaded)
Operating temperature	-10 °C to +60 °C		-30 °C to +70 °C	
Category	Standard	Black	Rugged	
Display type	Touch			
Display size	15.4"			
Brightness	450 cd/m <sup>2</sup>			1000 cd/m <sup>2</sup>
Display resolution, ratio	1280 x 800 (16:10)	1280 x 800 pixels		
Main memory	1 GB			2 GB
Dimension WxHxD (mm)	410 x 286 x 61 mm		410 x 286 x 73 mm	
Power supply	24 V DC (18 to 32 VDC)			
<b>Dimensions</b>				
Dimension W×H×D (mm)	410 x 286 x 61 mm		410 x 286 x 73 mm	
Cut-out dimension W×H (mm)	394 x 270 mm			
Mounting depth mm. (Including clearance)	53 (153) mm		66 (166) mm	
Mounting	Panel Mount, VESA 75 x 75		Panel Mount	
Weight	3.85 kg		4.1 kg	
<b>Environment and certification</b>				
RoHS compliance	DIRECTIVE/2011/65/EU			
WEEE compliance	DIRECTIVE/2012/19/EU			

<sup>1</sup> For detailed information on each module, please visit: [symphonyplushardwareselector.automation.abb.com](http://symphonyplushardwareselector.automation.abb.com)



Specific feature <sup>1</sup>	PP887S	PP895
<b>General info</b>		
Article number	3BSE092987R1	3BSE092981R1
Processor	ARM9 (1 GHz)	
External storage media	1 x SD card slot (or SDHC with latest image loaded)	2 GB SSD, 1.5 GB free for application storage
Net weight (kg)		7.38 kg
Operating temperature	-30 °C to +70 °C	0 °C to +50 °C
Category	Rugged	Standard
Display type	Touch	
Display size	15.4"	21.5"
Brightness	1000 cd/m <sup>2</sup>	250 cd/m <sup>2</sup>
Display resolution, ratio	1280 x 800 pixels	1920 x 1080 pixels
Main memory	2 GB	2.0 GB
Dimension WxHxD (mm)	410 x 286 x 65 mm	556 x 347 x 65 mm
Power supply	24 V DC (18 to 32 VDC)	+ 24 V DC (18 to 32 VDC)
<b>Dimensions</b>		
Dimension WxHxD (mm)	410 x 286 x 65 mm	556 x 347 x 65 mm
Cut-out dimension WxH (mm)	N/A	539 x 331 mm
Mounting depth mm. (Including clearance)	The sealed model is mounted on VESA bracket or similar and therefore the mounting depth is the same as dimension.	57 (157) mm
Mounting	Panel Mount, VESA 100 x 100	Panel Mount, VESA 75 x 75
Weight	4.8 kg	7.38 kg
<b>Environment and certification</b>		
RoHS compliance	DIRECTIVE/2011/65/EU	
WEEE compliance	DIRECTIVE/2012/19/EU	

<sup>1</sup> For detailed information on each module, please visit: [symphonyplushardwareselector.automation.abb.com](https://symphonyplushardwareselector.automation.abb.com)

# Accessories



Specific feature <sup>1</sup>	CB802 Profibus DP Interface	CB810 USB to Ethernet adapter	MB802V2 SD-card	RX800 Adapter
<b>General info</b>				
Article number	3BSE069285R1	3BSE042255R1	3BSE069477R1	3BSE093563R1
Operating temperature	-30 °C to +70 °C			
Net weight (kg)				1 kg
<b>Dimensions</b>				
Height	35 mm	23 mm	2 mm	
Width	130 mm	52 mm	23 mm	
Weight	0.18 kg	0.17 kg	0.01 kg	
Depth			31 mm	
Dimension W×H×D (mm)			23 x 2 x 31	
<b>Environment and certification</b>				
RoHS compliance	DIRECTIVE/2011/65/EU			
WEEE compliance	DIRECTIVE/2012/19/EU			

<sup>1</sup> For detailed information on each module, please visit: [symphonyplushardwarselector.automation.abb.com](https://symphonyplushardwarselector.automation.abb.com)



Specific feature <sup>1</sup>	RX874	RX881	RX883	RX886
<b>General info</b>				
Article number	3BSE069287R1	3BSE093559R1	3BSE093560R1	3BSE093561R1
Operating temperature	-30 °C to +70 °C			
Net weight (kg)	0.01 kg	0.1 kg		
Display size	7"	10"	12"	15"
<b>Dimensions</b>				
<b>Environment and certification</b>				
RoHS compliance	DIRECTIVE/2011/65/EU			
WEEE compliance	DIRECTIVE/2012/19/EU			

<sup>1</sup> For detailed information on each module, please visit: [symphonyplushardwarselector.automation.abb.com](https://symphonyplushardwarselector.automation.abb.com)



Specific feature <sup>1</sup>	RX895	TK858V002 Adapter Cable	TK859V000 Gender changer	TK860V001 Splitter cable
<b>General info</b>				
Article number	3BSE093562R1	3BSE069474R1	3BSE069475R1	3BSE069476R1
Operating temperature	-30 °C to +70 °C			
Net weight (kg)	0.1 kg			0.11 kg
Display size	21"			
Dimension WxHxD (mm)				76x190x100 mm
<b>Dimensions</b>				
Height		308 mm	17 mm	
Width		54 mm	32 mm	
Weight		0.09 kg	0.01 kg	
<b>Environment and certification</b>				
RoHS compliance	DIRECTIVE/2011/65/EU			
WEEE compliance	DIRECTIVE/2012/19/EU			

<sup>1</sup> For detailed information on each module, please visit: [symphonyplushardwareselector.automation.abb.com](https://symphonyplushardwareselector.automation.abb.com)





Specific feature <sup>1</sup>	TK865V000	TK865V030	TK865V100	TK866V000
<b>General info</b>				
Article number	3BSE092994R1	3BSE092988R1	3BSE092989R1	3BSE092995R1
Operating temperature	-30 °C to +70 °C			
Net weight (kg)	0.3 kg	1 kg	2.5 kg	0.3 kg
<b>Dimensions</b>				
<b>Environment and certification</b>				
RoHS compliance	DIRECTIVE/2011/65/EU			
WEEE compliance	DIRECTIVE/2012/19/EU			

<sup>1</sup> For detailed information on each module, please visit: [symphonyplushardwareselector.automation.abb.com](https://symphonyplushardwareselector.automation.abb.com)



Specific feature <sup>1</sup>	TK866V030	TK866V100	TK867V000	TK867V030
<b>General info</b>				
Article number	3BSE092990R1	3BSE092991R1	3BSE092996R1	3BSE092992R1
Operating temperature	-30 °C to +70 °C			-20 °C to +70 °C
Net weight (kg)	1 kg	2.5 kg	0.3 kg	1 kg
<b>Dimensions</b>				
<b>Environment and certification</b>				
RoHS compliance	DIRECTIVE/2011/65/EU			
WEEE compliance	DIRECTIVE/2012/19/EU			

<sup>1</sup> For detailed information on each module, please visit: [symphonyplushardwareselector.automation.abb.com](https://symphonyplushardwareselector.automation.abb.com)



Specific feature <sup>1</sup>	TK867V100	TK868V002 Splitter cable 3 way
<b>General info</b>		
Article number	3BSE092993R1	3BSE093567R1
Operating temperature	-30 °C to +70 °C	
Net weight (kg)	2.5 kg	0.1 kg
Dimension WxHxD (mm)		190x100x10 mm
<b>Dimensions</b>		
<b>Environment and certification</b>		
RoHS compliance	DIRECTIVE/2011/65/EU	
WEEE compliance	DIRECTIVE/2012/19/EU	

<sup>1</sup> For detailed information on each module, please visit: [symphonyplushardwareselector.automation.abb.com](https://symphonyplushardwareselector.automation.abb.com)

—  
[solutions.abb.com/symphonyplus](https://solutions.abb.com/symphonyplus)  
[solutions.abb.com/controlsystems](https://solutions.abb.com/controlsystems)

—  
800xA and Symphony Plus is a registered trademark of ABB. All rights to other trademarks reside with their respective owners.

We reserve the right to make technical changes to the products or modify the contents of this document without prior notice. With regard to purchase orders, the agreed particulars shall prevail. ABB does not assume any responsibility for any errors or incomplete information in this document.

We reserve all rights to this document and the items and images it contains. The reproduction, disclosure to third parties or the use of the content of this document – including parts thereof – are prohibited without ABB's prior written permission.

Copyright© 2024 ABB All rights reserved